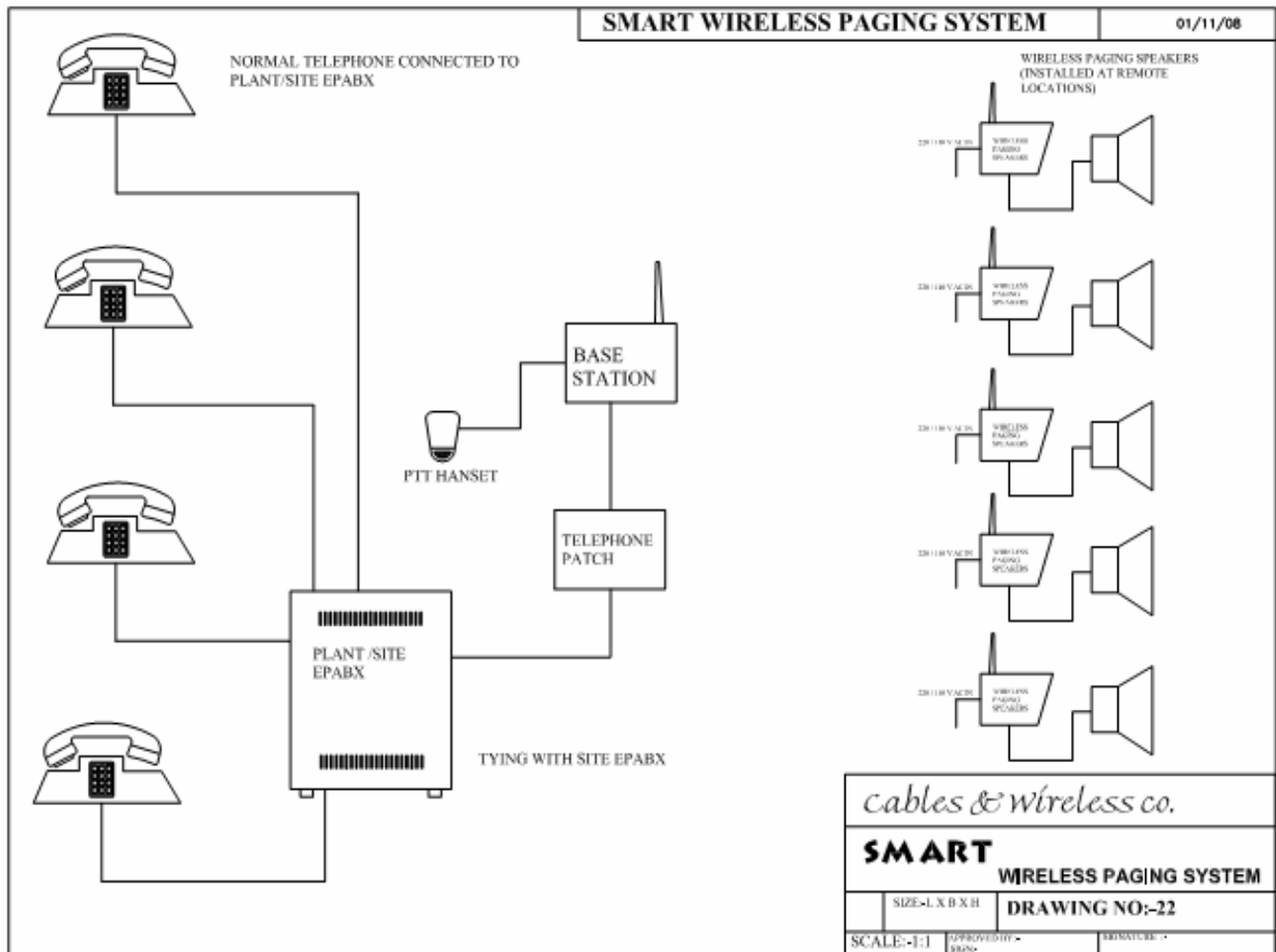


# SMART WIRELESS PAGING SPEAKER

**SMART WIRELESS PAGING SPEAKER** is the ideal solution where a hard-wired PA installation is simply impossible, too expensive, or temporary. It is a portable/wall mountable type WIRELESS PAGING SPEAKER & can be connected to a base station or mobile radio to deliver live voice messages(PAGING) directly to a speaker at long ranges without requiring any cabling & installation costing.



It has an integrated wireless radio receiver housed in a rugged, sealed, weather proof metal housing with integrated wall mounting bracket. The indoor /outdoor 60 Watt horn speaker provides 104 dB of audio output @ 1mtr, in noisy environments messages can be heard loud and clear. It has a built-in audio power amplifier with a trim pot to adjust Volume Output. Each WIRELESS PAGING SPEAKER can be paged from Handset/PTT of Base radio station ( VHF 148 - 176 MHz ) and can be paged from any normal desktop telephone connected to Plant/Site EPABX of plant by connecting a telephone Patch. Each WIRELESS SPEAKER can be paged individually. Multiple units can be placed throughout a facility, programmed identically, and activated simultaneously as a group.



## FEATURES:-

- It can work with existing wireless system ( VHF 148 -176 MHz )
- Supports long ranges.
- Installation requires no trenching, no extensive cabling
- It improves communication, safety and security.
- Factory programmed ready to use.
- Wireless Paging Speakers can be paged from base station / Hand held radios.
- By using telephone patch with the base station it can be patched with plant/ site EPABX system, thus can be paged from virtually anywhere
- It has 60 watt horn speaker (104db @ 1mtr max)
- The unit has 30 watts amplifier.
- It can be installed virtually anywhere.
- Operates on 110/220 VAC (with battery back-up)

## VERSATILE APPLICATIONS: -

- \* Cement Plants. \* Mines. \* Petrochemical Refineries. \* Chemical Plants. \* Construction Sites.
- \* Steel Plants. \* Spinning Yarns \* Fertilizer Plants. \* Sugar Mills. \* Power Generation Facilities \*
- \* Pulp & Paper Mills \* Food Processing Plant \* Warehouses \* Recreation Facilities \*Hydroelectric Facilities \* Drilling Rigs \* Ammonia Storage Area \* Process industries\*
- \* ANY LARGE AND MEDIUM SCALE INDUSTRIAL UNITS

## TECHNICAL SPECIFICATIONS: -

### ELECTRICAL PERFORMANCE: -

Output max

104 db.@ 1 Mtr Max

### ELECTRICAL REQUIREMENTS: -

Connection method

PCB terminal block type.

Fuse

0.25 Amp 2AG fast blows.

Power supply

220 VAC / 110 VAC switch able.

### ENVIRONMENTAL: -

Temperature

0 to +60 C.

Humidity

0 to 95% Rh non-condensing.

Enclosure

Dustproof fully gasketed.

### MECHANICAL: -

Dimensions

240 x 170 x 250 mm.

Net weight kgs

3 kg.

Standard mounting

Vertical wall.

**INDUSTRIAL COMMUNICATIONS SIMPLIFIED .**

# Cables & Wireless Co.

FF 75 RAJAT ARCADE, MIDC T-POINT,  
AMRAWATI ROAD, WADI, NAGPUR -440023.

PHONE:-07104-321913,07104-224381.

Fax:- 07104-224381.

Cell: - 098226 95746, 09225227945, 09822941190.

Website:- [www.cnwcom.in](http://www.cnwcom.in). E-mail: - [cnwcom@gmail.com](mailto:cnwcom@gmail.com).

**“(Specifications and description subjected to change without prior notice)”**